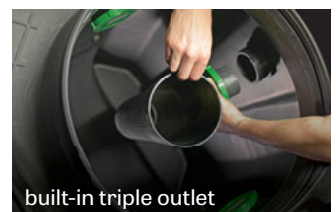
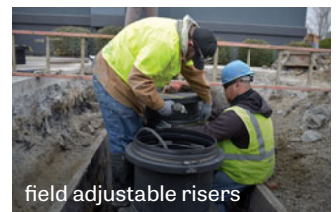




# Great Basin™

## High Efficiency Grease Interceptors



With over 70,000 installations since 2006 the Great Basin™ has become the preferred grease interceptor for thousands of plumbers. Add in best-in-class grease capacities and the industry's only lifetime guaranteed polyethylene design, and it's no wonder why the Great Basin™ is becoming the go-to interceptor for restaurant owners too.



**SCHIER**  
LIFETIME GUARANTEED  
GREASE INTERCEPTORS

# *Great Basin*<sup>TM</sup> High Efficiency Grease Interceptors



## Indoor Installations

### GB-15

15 GPM flow rate  
74 lbs. grease capacity



### GB-20

20 GPM flow rate  
109 lbs. grease capacity



### GB-25

25 GPM flow rate  
75 lbs. grease capacity



### GB-35

35 GPM flow rate  
142 lbs. grease capacity



### GB-50

50 GPM flow rate  
249 lbs. grease capacity



## Indoor/Outdoor Installations

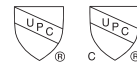
### GB-75

75 GPM flow rate  
616 lbs. grease capacity



### GB-250

100 GPM flow rate  
1,076 lbs. grease capacity



All models are Lifetime Guaranteed and certified to ASME A112.14.3 and CSA B481.1 by IAPMO.



**SCHIER**  
LIFETIME GUARANTEED  
GREASE INTERCEPTORS